

# BLOODY RIDGE NATIONAL PARK PROJECT

2024 SUMMARY AND  
PROGRESS REPORT



# Table of Contents

## Introduction

Page 3

### 1. Project achievements

4

1.1 Squatter evictions

4

1.2 Park clean-up

5

1.3 Boundary demarcation

6

1.4 Reducing unauthorized activities

7

1.5 Park security contract

9

1.6 Securing project funds

10

### 2. Park management, administration and planning

10

2.1 Bloody Ridge Environmental Management (BREM) Task Force

10

2.2 Park Expansion

11

2.3 NZ Camp progress

12

2.4 Community asset mapping

12

2.5 Community projects

13

2.6 Events and visits

13

2.7 Park name adjustment

14

2.8 UXO, human remains and war relics

15

### 3. Project expenses and funding

16

3.1 Expenses and funding overview

16

3.2 Summary of BRNP project expenses

17

3.3 Project funds direct to community

17

### 4. Activities planned for 2025

17

4.1 Ongoing activities from 2024

18

4.2 Core Park infrastructure development

18

4.3 Park infrastructure and landscape development

18

4.4 Training and Awareness

19

4.5 Organizational priorities

19

## Summary

20

# Introduction

Bloody Ridge battlefield is a site of iconic status receiving worldwide recognition. It is sometimes referred to as the turning point of WWII in the Pacific. In recognition of its historical importance Bloody Ridge was declared a national park in 2017. MCT declared the development of the park a national flagship project. Several events took place between 2020 and 2023 that delayed the project. The most serious was the covid pandemic, as well as squatters moving into the park. In late 2023 a dedicated team from tourism division was assigned to tackle the issues facing the project.

2024 saw the most significant achievements since the park was declared. After an intense awareness campaign all squatter settlements were removed from the park. This unlocked donor funds which had been frozen due to safeguard issues related to the squatters. Other types of encroachment activities were also curtailed.

Another milestone development was the engagement of a security firm. The presence of full-time security has drastically improved safety and put a stop to anti-social activities in the park.

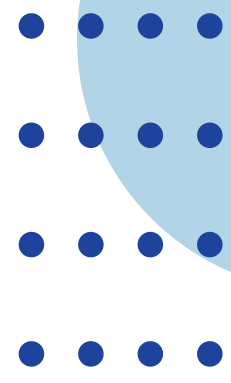
These achievements have paved the way to finally implement the ambitious plans made for the park which are outlined in the *Bloody Ridge Development Concept Plan (2018)* and the *Bloody Ridge National Park Operational Management Plan 2019–2029 (2019)*.



## VISION STATEMENT

The Bloody Ridge National Park provides a world-class, authentic and accessible historic battleground site for the benefit of the people of Solomon Islands and Visitors for generations to come.

# 1. Project Achievements



## 1.1 Squatter evictions

Control of the park is a prerequisite to unlock future funding from both SIG and donors. Starting in mid-2023 MCT took actions to reclaim the park. This coincided with the formation of a community policing unit at Bloody Ridge. This group acted as a valuable local partner, and all activities in and around the park was conducted jointly with this unit. The first step was to survey the park to determine the number, location and legal status of each settlement.

- 11 residential dwellings were found inside the park, as well a number of garden sheds.
- 44 squatters lived permanently inside the park.
- Buildings were erected between 2016 and 2023. The majority around the time just after the declaration of the park in 2017. Five buildings were less than a year old.
- All squatters were aware that they resided inside the boundaries of the Bloody Ridge National Park.
- None of the squatters were customary landowners.



Eviction Awareness

The Bloody Ridge development team embarked on an intense awareness campaign. The goal of the campaign was to make it clear beyond any doubt to the settlers that the development of the park was going to happen. It was also important to make it clear to everyone that the government is the lawful owner of the land, and where the boundary is located.

Once the team was satisfied that everyone in the community was fully aware of the governments tenure and plans for the area, Attorney General’s office issued a 30-day eviction order on the 5th of April. The counsellors from AG’s chambers visited each settler household personally and explained the consequences of non-compliance. This process was recorded on video. During the month leading up to the last day MCT made weekly compliance check visits, and kept reminding settlers how many days they had left until the legal process would start.



On the 5th of May when the 30-days’ notice ran out 9 out of 11 settler households had vacated voluntarily. The two last holdouts required several more follow-up visits by MCT before they eventually gave up and left as well. On Monday 24th of June Bloody Ridge National Park was finally declared free of illegal squatters. The settlers were acknowledged by MCT and AG’s office for respecting the eviction order and vacating the park peacefully. Immediately after the last squatter had left Strongim Bisnis approved the funding of basic park infrastructure, such as a guardhouse, visitor toilets and shelters at a value of 600,000 SBD.



**Squatter settlement before and after**

## 1.2 Park clean-up

When the squatters vacated, they removed valuable building material, but a lot of trash was left behind. Apart from discarded building material, years of household waste had created a large buildup of rubbish at each settlement. Concrete slabs and fences also needed to be removed. A time consuming and costly clean-up campaign was needed to rid the park of rubbish. Instead of using a contractor for this work, the MCT team engaged local residents that were paid hourly and provided meals while working. This proved both cost-effective and a good way of building relationship with the community. Many of the locals who took part in the clean-up are now working as security guards. The clean-up took 8 days, at a total cost of 5,842 SBD.



**Squatter settlement site and rubbish removal**

• Labour @ 10 SDB per hour	3,280
• Food & water for labourers	1,060
• <u>Transport and waste deposit fees</u>	<u>1,503</u>
	5,842

### 1.3 Boundary demarcation

The boundary of the park was not marked before 2024, and in some areas even MCT staff was not exactly clear on where it was located. This was an issue as locals gardening or settling inside the park could claim ignorance on which land belonged to the park. Proper demarcation of the park boundary was therefore one of the priorities of 2024. The boundary line is 2.9 km long, making a proper fence very costly. It was decided to mark the boundary clearly, while still allowing local people right of passage through the park. In collaboration with surveyors from Ministry of Lands, 95% of the boundary have now been marked. This completion of this project is dependent on the availability of Lands Officers. The boundary markers consist of a metal fence post concreted in place every 30 meters. The work is challenging due to the difficult terrain, with material and equipment having to be hand- carried up and down steep hills.



**Boundary marker installation**



**Lands surveyor**

• Labour @ 10 SDB per hour	4,840
• Food & water for labourers	2,695
• <u>Transport and waste deposit fees</u>	<u>5,097</u>
	12,633



**Boundary plants**

To increase visibility of the boundary the planting of a Kastom boundary, using “croton” type plants have started. Local women’s groups have been engaged to raise seedling and plant. This has been a steep learning curve for everyone involved and the team is updating the methods and briefing notes constantly. Early attempts were damaged by grass fires, and the planting of immature seedlings. Results are now improving for each section.

100,000 SBD of MFAT funding (to MCT) have been earmarked for this project. This will be enough to line 70% of the boundary with croton plants. This work is ongoing, an estimated 20% of the boundary line was planted in 2024.

## 1.4 Reducing unauthorized activities in the park.

Apart from squatter issue there was a number of illegal activities inside the park at the beginning of 2024. Due to ongoing awareness and weekly patrols some of the most problematic encroachment activities have either ceased or been heavily reduced. The work to stop all encroachment in the park will continue in 2025.



### Gardening

Substantial areas within the park have been used for agriculture (food gardens). Large part of the areas original forest cover has been cleared in this way. Much of this was done by settlers in the park. People from surrounding communities also use the park for gardening. The total area used for gardening varies, but it was estimated to be at 15-20% of the park in early 2024. Marijuana plantations was also encountered, both inside and outside the park, highlighting the lack of law enforcement in the area.

Once the squatters had vacated the team shifted focus to the illegal gardening. With the boundary markers up and clearly visible it was now clear to the community where the boundary is located. The team also conducted individual outreach and awareness with locals who were farming inside the park. In October, signs were placed at remaining gardens giving them a deadline until 1 Jan 2025. This has helped in the accessible areas of the park, but gardening is still going on along the southern boundary which is more remote. The goal is that all gardens will be removed in early 2025.



### Anti-social activities

Bloody Ridge has developed a reputation as a drinking place. Cars or group of youths often gather at hill 1 or 2 to drink. The result is public intoxication, fights, noise and vandalism. Most of the trash around the monuments are a by-product of these drinking sessions. Trying to keep these sites clean was all but impossible, as they keep being covered in broken glass and litter. This very serious issue requires security 24/7. Since late 2024 security is in place and drinking in the park has been reduced dramatically in just a few weeks. There are high hopes that anti-social activities in the park will cease in 2025.

There were no crimes reported against visitors in 2024. In previous years there were incidents of daylight robberies and knife assaults. The surrounding community still experienced crime and violence, including one recent assault resulting in a fatality.



### Encroaching roads

Existing trails inside the park have been illegally widened for vehicle traffic to access new settlements surrounding the park. Vehicle traffic was initially limited, but it has now grown out of control. As some of these communities are expanding at an alarming rate, these short-cuts will become major thoroughfares within a few years. In 2024 there were three unauthorized roads in use. The southern road has created the most damage to the environment and the road was permanently closed in early December following a 6-week notice to the community. The remaining two road closures are more delicate as they will affect far more people. Awareness meetings at affected communities will be held in early 2025.



### Cremations

The Japanese precinct (hill 1) have been used for human cremations, mainly for deceased Asian individuals. These unauthorized cremations have been facilitated (for profit) by Honiara City Council without permission from MCT. Apart from being an inappropriate activity on a historical site, locals also complained about the smell caused by the cremations. In addition, funeral ceremonies generated a lot of rubbish which was never cleaned up by the organizers. Verbal warnings and a cease-and-desist letter signed by MCT's Permanent Secretary had no effect. It took the removal of the large concrete slab used for the cremations to finally stop this activity.



### Treasure hunting holes

Due to persistent rumours of hidden Japanese gold at Bloody Ridge, local treasure hunters have dug deep holes inside the park. Some of the holes are several meters deep, creating a serious hazard for the visiting public. Often these vertical shafts are hard to see in the tall grass. Some of the deeper shafts are located near the Japanese and US monuments. Work to back-fill the shafts began late 2024 and will be completed early 2025.

## 1.5 Park Security

Protected areas need rangers or security to look after it. Due to lack of funding, it was not possible to engage a security company until late 2024. Finally having security in the park is the most significant milestone in the project to date, and it will drastically decrease the issues that have faced the park project.

MCT decided early in the project that the security should be recruited from the local community. The jobs created would increase community support and create a sense of ownership of the park. During the early work with squatter awareness the local community policing unit proved to be very supportive of MCT's plans for the park. They were advised to create a security company which could then be contracted by MCT to manage security in the park. This arrangement required a bid-waiver approval by Accounting General as it was vital that the contract was awarded to the community company.

The set up of the proper community owned company proved to be rather complicated, and was further delayed when a group within the community registered a private company in an attempt to secure the contract for themselves. MCT's Bloody Ridge team was closely involved and guided the community through the process. Eventually the company Bloody Ridge Community Security Services was awarded the contract. This company is owned by the Bloody Ridge Community Association Trust. The security contract is worth 400,000 SBD annually and will be funded by SIG, paid in monthly installments.

28 security guards and two supervisors were recruited from the community policing unit. Many of them had either previous security training or had participated in RSIPF led community policing training. Several of the recruits had also participated in BRNP work crews during 2023 and 2024. On the 17th of December MCT conducted a full day induction training for new recruits. The following day the recruits built a temporary guardhouse at the gate. The first official shift was on the 19th of December.

### Bloody Ridge National Park security guards



The park is now manned 24/7, with 4 guards on dayshift, and 3 on night shift. Staff on day shift take turns in patrolling the park, as well as cleaning and keeping vegetation in check. Night shift staff focus on security at the gate since most issues happen at night. Initially the focus of the guards will be security, but over time and with additional training the goal is to develop the staff to perform more varied tasks, similar to park rangers. MCT will provide close support to the security company supervisors and staff to ensure that they perform as intended.

## 1.6 Securing project funds

The BRNP project has struggled due to lack of available funding. As a result of the achievements in 2024 funding started to become available. Three significant funding commitments were secured in late 2024, which will allow for major developments in 2025.

- 400,000 – (SIG) security contract for community company guarding the park.
- 600,000 – (Strongim Bisnis) basic park infrastructure; guardhouse, toilets, water supply and visitor shelter.
- 1,400,000 – (SIG) due to increased MCT budget for 2025 some 1.4 mil will be allocated to the Bloody Ridge project.

For a summary of project expenses for 2024, see section 3.2 *Summary of BRNP project expenses*.

# 2. Park management and planning



## 2.1 Bloody Ridge Environmental Management (BREM) Task Force

A lot of damage was done to the historical landscape at Bloody Ridge by squatters settling in the park. Land was cleared, roads were cut, and rubbish was piled up inside the protected area. With the squatters finally removed the effort to restore the landscape to its original state can begin. This activity is outlined in the operational management plan. The goal is to restore the landscape to look as it did at the time of the battle in 1942. During this time the low areas of the park was covered in native forest while the ridges were covered in grass. The grass lands are mainly intact, but large portions of the native forest have been cleared. The idea is to replant the cleared areas and bring back native forests to the low areas.



**BREM Taskforce**

During 2024 MCT was seeking advice on this from from Ministry of Forestry & Research (MOFR), Ministry of Environment, Climate Change, Disaster Management and Meteorology (MECDM) and Solomon Islands National University (SINU) – School of Natural Resources. Many productive meetings were held, and SINU and Forestry became the main drivers. The Bloody Ridge Environmental Management (BREM) Task Force was formed

and work started on a MOU between the parties on collaboration in the management of the park. The broad idea is that SINU and MOFR will provide advice and project management on the environmental rehabilitation of the park. In exchange SINU students and MOFR staff will be able to access the park for research and training purposes. The core value of the park is its historical significance, but over time it should also be developed into a place of research, learning, recreation and appreciation of nature.

The BREM Taskforce prepared a draft plan and budget for the rehabilitation project in late 2024.

## 2.2 Park Expansion

The current size of Bloody Ridge National Park is 33 ha. This is significantly less than what was originally envisioned. In the original plan the full battlefield was included, as well as the area north of the park known as NZ camp. Towards the east, the site of another important battle (the Battle of Henderson Field) was included. This area is known as Coffins Corner. When the park was being planned there was almost no development or settlements in the area, and the idea was to acquire land in stages. Due to lack of funding this has not happened as planned. Rapid development around the park is making an expansion of the park increasingly challenging. Some communities are expanding exponentially, right up to the boundary of the park. While MCT has adjusted its plans to the current reality, the intention is still to expand the park in three areas:

- Realigning western boundary with main road; this would be a natural boundary for the park, and it includes some important historical areas.
- NZ camp; there are significant historical remains at this location just north of the park. The BRNP operational plan outlines a “NZ Precinct” at this location.
- Coffins Corner; the battle of Henderson Field took place in the area between Bloody Ridge and Tenaru school. The site where war hero John Basilone earned his Medal of Honor is located a few hundred meters east Bloody Ridge and this area requires protection and would provide a valuable addition to the park.

Most of the land surrounding the park is leased from the government by Levers Ltd. When the park was created the government bought back the lease from Levers. Currently Levers land lease in Solomon Islands is under intense scrutiny by the government. Due to this, MCT has been advised by Commissioner of Lands to hold off on further land acquisitions until a decision has been made about the status of Levers land leases in Solomon Islands.

## 2.3 NZ Camp Progress



**NZ Camp**

During 2024 there was significant work done to improve accessibility of the underground air raid shelter at NZ camp. This work was done by NZ and Fiji military. A monument has been erected at NZ camp commemorating New Zealand's participation in the Solomon Islands campaign during WWII. Rapid development is currently taking place at this site. A local woman claims to have leased the land from Levers Ltd. In turn

she has sub-leased the land to local people. Currently they are raising funds to sub-divide the land. MCT has always been under the impression that there was a caveat on the land earmarked for inclusion in the park. Local settlers claim to have legal lease and Lands has not provided clear guidelines on this issue. If action is not taken by early 2025 this site will likely be lost for future inclusion in the park.

## 2.4 Community asset mapping

The viability of the park is dependent on ongoing engagement with the community. The most important way to do this will be to provide jobs in the park. However not everyone will benefit from this, and benefits need to reach the wider community. MCT is trying to attract development and funding to the community as a way of building social license. As part of this effort the team conducted a "Community Asset Mapping". The report highlighted the strengths and weaknesses within the Bloody Ridge Community and provided suggestions for projects that would be beneficial to local people.

## 2.5 Community projects

As a result of the community asset mapping, the following ongoing and planned projects are underway due to support from the MCT-team:

- Alaema water project: One of the main challenges for local people is access to water. Currently most locals access their water from Lunga river which is heavily polluted by gravel extraction operations. The team assisted the community to apply for a grant from the New Zealand High Commission Embassy Fund. The grant was for 100,000 SBD and funded water supply for Aelama village, where the main school in the Bloody Ridge area is located. The water project included a borehole, a water tower with pump, delivering water to three stand pipes in the village. Most of the work was completed in 2024, and project handover is planned for early 2025.
- CAUSE project road-upgrade: Due to previous collaborations with the CAUSE project, MCT was asked to provide a list of proposed development priorities for greater Honiara. Road access to Bloody Ridge was suggested as the main priority by MCT. This was (partly) approved, and in the next phase of CAUSE the first kilometer of the three-kilometer road to Bloody Ridge will be surfaced and drained. This is the section from the crossroads roundabout, through Sun Valley to the end of the Henderson runway.

## 2.6 Events and visit



World Tourism Day Peace March

One of the main events this year was the celebration of the world tourist day which was marked by a “Peace March” organized by Inbound Tour Operators, supported by MCT and Tourism Solomons. The event started at Hill 1 (Japanese precinct) and continued to hill 2 (US precinct). The walk then went on to the Pagoda near Henderson. During the walk, tour guides provided commentary on the events of the battle.

Several WWII historians also visited the park. Engaging with these historians have helped the team better understand the battlefield and to plan future development accordingly.

- Guadalcanal expert Dave Holland brought a group of Australian historians to the park. This visit resulted in several podcasts and Youtube videos being published.
- Military author Andrew Lubin also explored the park, and met with the MCT team to discuss possible support.
- US Defense POW/MIA Accounting Agency (DPAA) historian Robert Thompson joined the team to point out important historical features related to the battle.



U.S. Marine Corps Cpl. AnnaLina Hill , an ammunition technician with Marine Rotational Force – Darwin 24.3, poses for a photo following her reenlistment ceremony at the Battle of Bloody Ridge memorial in Honiara, Solomon Islands, Aug. 8, 2024

## 2.7 Park name adjustment

In many countries a battlefield or a historic site can be legally protected as a historical park or heritage site. Since there is no such law in Solomon Islands, the Attorney General at the time advised MCT that the National Parks Act 1954 could be used to protect Bloody Ridge. That is the reason a National Park was declared at Bloody Ridge. Usually, a National Park is a protected area of natural and cultural significance, but in this case the Act was used to protect a WWII historical site.

During consultations leading up to the creation of the park Japanese stakeholders suggested that the park should be called a “peace park”. In Japanese, any museum or site related to WWII is called a “peace” museum or park. One of many examples is the “Chiran Peace Museum for Kamikaze Pilots”. For some reason this suggestion was included, and the park has been formally known as Bloody Ridge National Peace Park (BRNPP) since then. In other languages, including English, this is a very unusual description of a battlefield site. When promoting the park, and when seeking international funding, it is important that the park has a name that is in line with similar sites worldwide. For this reason, the word “peace” has been taken out, and the park is now known simply as Bloody Ridge National Park (BRNP). Should an appropriate Act be created in the future, the park might be renamed to Bloody Ridge National Historical Park.

## 2.8 UXO, human remains and war relics

**UXO:** The MCT team is spending a lot of time walking over a battlefield littered with remnants of war. Lack of understanding about explosive ordnance has caused staff to



be either overly cautious or reckless. To improve UXO awareness staff participated in a half-day training session held by the RSIPF EOD Unit at Hells Point. Since the training four UXOs have been encountered and properly marked and reported by staff. EOD police officers removed all reported UXOs in a timely manner.

**Human remains:** In the past a number of human remains have been recovered from Bloody Ridge. In 2024 there was no active search by recovery teams, however a set of bones and teeth were found by locals in the southeast section of the park.



The bones were collected by the MCT-team and handed over to the US DPAA. DPAA teams visit Solomon Islands twice a year and work closely with MCT's museum division. In 2025 a large excavation is planned in Colina village just south of Bloody Ridge. The Bloody Ridge team is assisting DPAA to negotiate access to the dig site with the local community.

**War relics:** during the park clean-up the team encountered a number of war relics, such as pig-tails, bayonets and bullet casings. These have been secured and will be



used in the future museum that is planned at Bloody Ridge. Many local people have collected war-related objects over the years, and enough relics would be available (for sale) in the area to create an interesting WWII exhibition.

# 3. Project expenses and funding



## 3.1 Expenses and funding overview

The funding of the park project has been limited until very recently. Partly this has been due to the lack of tangible progress. Budget restraints have also affected the government's ability to move the project forward. Donor support has essentially been blocked due to safe-guard issues related to the presence of squatters in the park. A lot of focus of the work in 2024 was aimed at removing these barriers; removing the squatters to release donor funds, and demonstrate progress and ownership of the park to the government.

Achieving progress with minimal funds required the MCT to use resources creatively. Rather than engaging contractors in a time consuming and costly activities, the team themselves led a lot of the work on site. Community members were hired by the hour for specific tasks. This proved to be very cost effective, but required close supervision by MCT staff. The majority of the funds used came from MFAT (NZ) budget support to MCT. The funds were released as activity specific imprests, giving the team the ability to pay directly for labor, services and material. For some activities material was used that had been reclaimed from other, non-performing MCT projects.

The project expenses for 2024 totaled 36,876 SBD. The source of these funds were:

- MFAT · (via GFA budget support to MCT, and TA operational expenses) – 88%
- MCT funds (SIG) – 12%

An outstanding debt of 60,000 SBD for park clean-ups in 2022-23 was paid by Tourism Solomons to the Bloody Ridge Community Security Service. This payment is not included in the project expenses for 2024.

## 3.2 Summary of BRNP project expenses

### Activities and cost summary 2024:

• Eviction Awareness & compliance checks (completed)	\$1,370	4%
• Squatter settlements clean-up (completed)	\$6,003	16%
• Boundary demarcation (ongoing)	\$20,438	56%
• Infrastructure (ongoing)	\$1,050	3%
• Landscape rehabilitation (ongoing)	\$787	2%
• Awareness, compliance and enforcement (ongoing)	\$1,978	5%
• Security guards set up and running costs (ongoing)	\$4,845	13%
• Monument repair and maintenance (ongoing)	\$404	1%

**Total: 36,876 SBD**

## 3.3 Project funds direct to community

Out of the total project expenses 48% (18,560 SBD) benefited the community directly;

- Salaries – 93%
- Community based business – 7%

The remaining expenses (18,560 SBD) went to local service providers and businesses;

- Tools & Materials – 26%
- Food & Water Laborers – 41%
- Transport & Fuel – 10%
- Printing and Office supplies – 14%
- Misc – 9%

# 4. Activities planned for 2025 >>>

The achievements of 2024 have removed some of the barriers to the development of Bloody Ridge National Park. This has created a momentum that has paved the way for major developments in 2025.

## 4.1 Ongoing activities from 2024 (to be completed first half of 2025)

- Complete boundary demarcation.
- Remove remaining unauthorized gardens.
- Seal dangerous treasure hunting holes.
- Finalize plan and budget for park landscape rehabilitation.
- Ensure Aelama Water Project is completed and fully functional.
- Provide community security with required tools and equipment.
- Support community security to provide effective protection of the park and its visitors.

## 4.2 Core park infrastructure development (funded by Strongim Bisnis):

- Guardhouse at park entrance.
- Visitor and staff ablution block (separate)
- Water supply (bore hole and water tower)
- Visitor shelters next to Japanese and US memorials

## 4.3 Park Infrastructure and landscape development

### Priority 1:

- UXO clearing; priority to clear site for Strongim Bisnis funded infrastructure.
- Monument repair and upgrades.
- Interpretation / Signage
- Visitor Shelters
- Walking Trails

### Priority 2:

- Landscape rehabilitation
- Restoration of selected WWII features
- Landscaping

### Priority 3:

- Roads; improve park roads and assist in rerouting of roads encroaching the park
- Transport: vehicle for MCT team, and ATV for security.
- Transport

## 4.4 Training and Awareness

A series of workshops and events will be organized to train BRNP stakeholders and members of the local community.

- Park Security trainings: workshops aimed at increasing staff effectiveness.
- Look for opportunities for exchange programs for staff, both locally and overseas.
- Bloody Ridge battle awareness for tour guides.
- EOD awareness for community.
- Public meeting regarding road closures in park.
- Boundary awareness event for community.
- Land tenure awareness for NZ camp residents.
- Assist DPAA to gain access to a site near BRNP in order to recover remains of fallen US personal.

## 4.5 Organizational priorities

- MCT Park Unit: Create a dedicated BRNP unit under MCT's Tourism Division. Having a dedicated unit with full time staff allocated with funding and specific responsibilities will ensure the sustainability of this national flagship project.
- Park extension: liaise with Ministry of Lands regarding extension of the park, and safeguard selected areas for future inclusion. As a priority, stop development at NZ camp and clarify tenure of residents.
- Rerouting of access roads: coordinate stakeholders (MCT, Lands, MID, and G-Province) to secure an alternative access for settlements east of the park. Once alternative access has been arranged, close two unauthorized short-cut roads through the park.
- Entrance fee: once basic infrastructure is in place (guardhouse and visitor toilets) a modest entrance fee will be introduced. This will be increased over time as visitor facilities improve.
- Future funding: continue to seek funding and support for the development of BRNP. This should not be limited to SIG, but include funding through donors, grants, NGO's and private sector sponsors. Support for the park project may also come through assistance, volunteering and donation of equipment and material.
- Museum / visitor center planning: The final part of implementing the BRNP Operational Management Plan 2020-2029 is the development of a world-class museum / visitor center in the park. During 2025 the work to prepare for the museum project will start:

- Determine a suitable location
- Architectural design
- Design exhibition
- Secure collection of relics to be displayed
- Secure funding for construction of museum and development of exhibition.

# Summary

The achievements of 2024 paved the way to realize the full potential of the Bloody Ridge National Park project. 2025 will be the year when the park becomes fully secured and key infrastructure is put in place. Visitors will see significant improvements in access, safety and the overall experience. The local community will notice increased park activities, and start to experience some shared benefits. As facilities improve the standing of Bloody Ridge National Park as a visitor attraction will increase. This in turn will generate revenue and additional funding support which will enable MCT to implement the BRNP Operational Management Plan before it runs its course in 2029. As always, the goal is making Bloody Ridge National Park the leading WWII attraction in the Pacific.