

## Rural Development Division (RDD)

The Rural Development Division (RDD) hosts the technical functions of the Ministry. The Division is headed by the Deputy Secretary Technical (DST). It is composed of five (5) technical Units which include;

- Project Planning and Implementation
- Monitoring and Evaluation
- Procurement
- Research and Development
- Data Entry Unit
- 50 constituency offices

### RDD key functions include;

1. Support preparation of the Constituency Development Profiles and Plans in close consultations with Constituencies.
2. Oversee project planning, design, appraisal and implementation with respect to the Project Planning Guidelines and provide technical support to constituencies when needed.
3. Facilitate the implementation of Constituency Development programmes and related funding with respect to SIG and PRC financing and procurement guidelines.
4. Provide capacity building and technical support to constituency officers and constituency development committees where and when needed.
5. Monitoring and evaluation of projects and programs implemented through Constituency Development Funds.
6. Carry out research and development assessment as part of rural development planning process at constituency level.
7. Coordinate development of Constituency Development Centres.

## Our Core Values

Accountability & Transparency	MRD will deliver its mandates and services in an open, fair and responsible manner.
Commitment	MRD is devoted to delivering its purpose and vision.
Confidence	MRD staff are self-assured in their own abilities and qualities to perform their roles.
Discipline	MRD operates within a set of organizational rules and standards at all times.
Honesty	MRD strives to maintain high ethical standards and professionalism at work and in all decision making.
Creativity	MRD Staff are always inspired to invent new ideas and concepts that deliver practical development Solutions
Reliability	MRD must ensure trust and confidence is accorded to the services that we deliver to all our Key Stakeholders.
Respect	MRD values and embrace everyone with diverse cultures and status with equal and positive treatments.
Partnership	MRD functions as a nexus, that integrates varied efforts from different stakeholders towards our common goals and vision.
Teamwork	MRD works as an organisation by instilling a sense of close collaboration at work towards achieving our organizational vision and goals.

### For more information contact:

**Ministry of Rural Development  
Communication and Public Relations Unit (CPRU)  
P.O Box . 1983, Honiara,  
Solomon Islands  
Phone: 25238/25239/25254**

SOLOMON ISLANDS GOVERNMENT



# Ministry of Rural Development



The Ministry of Rural Development (MRD) is one of the 24 ministries within the Solomon Islands Government (SIG) machinery. MRD is established on the 28th September, 2007. Its core mandates as contained under Legal Notice 164 in accordance with the Constitution of Solomon Islands is to oversee the effective planning and implementation of Government's Rural Development Policy.

## Our Vision

All rural Solomon Islanders become meaningfully participated in development activities to improve their social and economic livelihood.

## Our Missions

1. Building our Human Resource capacities to effectively deliver sustainable rural development.
2. Transforming our Institutional structures, Processes and Legal environment that enables sustainable rural development.
3. Building Effective Partnership with Key Stakeholders in Development programming.

## Key Mandates And Funtions

The Ministry's core mandates are provided under the relevant legislations administered under MRD. These includes;

i. Legal Notice 164 as in accordance with the Solomon Islands Constitution. The legal notice/gazette provides five (5) key functions for the Ministry which include;

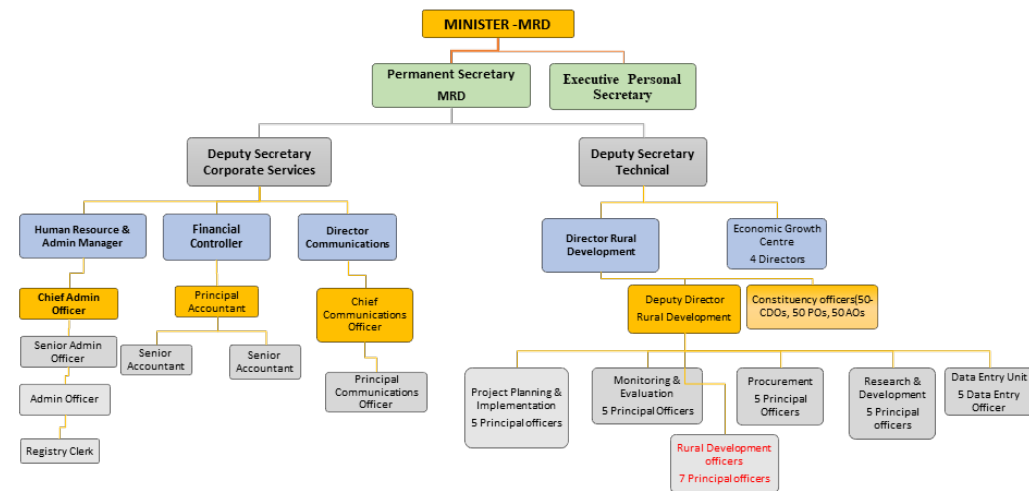
- Rural Development
- Constituency Development Office
- Constituency Development Funds
- Indigenous Affairs\*
- People First Network\*

ii. Constituency Development Funds Act (CDF) 2013 (3) (CDF Act gazetted but not yet operationalized).

The CDF Act 2013, mandates the ministry (MRD) to carry out the management and disbursement of the Constituency Development Funds (CDF) with integrity and in a prudent manner with a view to safeguarding the interest of potential recipients of the funds. Section 6 (2) gives responsibility for MRD to coordinate formulation of Constituency Development Plans and to ensure plans satisfies the planning guidelines.

The Ministry's core functions focus more on coordinating the work of fifty (50) Constituencies in terms of Constituency development programmes for rural development and growth to improve rural people livelihoods.

## Organisational Structure



## Divisions & Units

### Corporate Support Services Division

The Administration and Human Resources Division part of the Corporate Services in the Ministry's Headquarter.

Headed by the Deputy Secretary Corporate Services (DSCS), Administration and Corporate Services Division key responsibilities include;

- Provide Support Services – Administrative and logistic support to the operations of the ministry.
- Strengthen Institutional structures and process.
- Manpower resources management and coordination of ministry annual work Programmes.
- General Staff welfare – Remuneration/Retention.
- Human Resources Management Information Systems.
- Staff Development Plan-Long and Short-term training (Local and Overseas).
- Coordinate roll-out of New Public Service Policy as may be required.

### Finance and Accounts Unit

The Finance and Accounts Unit is also part of the Corporate Support Services and functions within the Headquarter and Administration of the Ministry.

It is responsible for providing financial support services, effective accounting management system and asset management system as required under the Public Finance and Audit Act (as amended) and Public Service General Orders.

To ensure compliance with financial disciplines and associated regulations, the Division liaise closely with the Ministry of Finance and Treasury and the Office of the Auditor General in performing its functions.

### Communication and Public Relations Unit (CPRU)

CPRU is a newly established Unit within the ministry under the Corporate Service Division.

CPRU links the ministry with its key stakeholders and the general public.

It provides information that will promote positive relations and interaction with MRD and all stakeholders on issues relating to constituency development.

#### Key responsibilities include;

- Coordinate the formulation of the Communication Strategy and its implementation with other divisions and key stakeholders.
- Promote and publicise the key mandates, functions, Visions and Strategic goals of the ministry and all development programmes to its key stakeholders and the public thereby raising the visibility and profile of the ministry through radio, newspapers, TV and other informational print materials.
- Provide advice and update information on development programmes that will enable sound decision making and win stakeholders support.

### Constituency Development Programmes

There are two (2) types of funds (support) available at the Ministry for constituency Development.

1. Solomon Islands Government Constituency Development Fund (SSCDF).
2. People's Republic of China Constituency Development Fund (PRCCDF).

The purpose of the funds is to support all the 50 constituencie through their respective constituencie offices & officers on projects such as; basic social Infracture, Water and Sanitation and income generating initiatives to improve people's livelihood in the rural communities. Also it aimed at increasing employment and labour mobility opportunities in the rural areas and economic opportunities for rural people