



SOLOMON ISLANDS GAZETTE

NO. 43

Wednesday 2nd February

2022

EXTRA-ORDINARY GAZETTE

LEGAL NOTICE

The following is published as a Supplement to this Gazette:
[Legal Notice No. 42]

[Legal Notice: 42]

EMERGENCY POWERS ACT

(Cap. 11)

EMERGENCY POWERS (COVID-19) (NO. 3) REGULATIONS 2021**EMERGENCY POWERS (COVID-19) (CENTRAL ISLANDS PROVINCE
EMERGENCY ZONE)(RESTRICTION OF MOVEMENT OF PERSONS AND
VESSELS IN HAGALU) ORDER 2022**

I, Hon. Manasseh Damukana Sogavare, Prime Minister, under regulations 15 and 17 of the *Emergency Powers (COVID-19) (No. 3) Regulations 2021* (Legal Notice No. 318 of 2021), make the following Order:

1 Citation

This Order may be cited as the *Emergency Powers (COVID-19) (Central Islands Province Emergency Zone) (Restriction of Movement of Persons and Vessels in Hagalu) Order 2022*.

2 Commencement

This Order commences on the day it is published in the *Gazette*.

3 Definitions

In this Order:

“**emergency zone**” means the emergency zone declared for Central Islands Province by Legal Notice No. 39 of 2022;

“**essential service**”:

(a) has the meaning of “essential service” given in section 2(7)(a) of the *Essential Services Act* (Cap. 12); or

(b) means any other service the interruption of which could endanger human life, destroy property or cause serious injury to persons or property, including police, correctional services, biosecurity, national disaster and emergency;

“**essential worker**” means:

(a) a person employed or engaged in carrying out functions, duties or responsibilities in an essential service; or

(b) a person who the Prime Minister specifies in writing is an essential worker for the purposes of this Order;

“**matter of urgency**” in respect of a person, means a matter that is urgent for

any of the following reasons:

- (a) to access immediate medical assistance or treatment for the person;
- (b) to assist another person to access immediate medical assistance or treatment;
- (c) to attend to or avoid an emergency or any other situation which, if not attended to or avoided, may result in serious injury or loss of life to the person or another person;

“place of residence”, of a person, means an area or place in Hagalu where the person resides, regularly stays or is temporarily accommodated, and includes:

- (a) a building or other habitable structure or a yard to a building or structure; or
- (b) a vessel; or
- (c) an area or place that is:
 - (i) a garden where the person usually grows or harvests food; or
 - (ii) an area of the coastline of the Hagalu, or of the inland or archipelagic waters within Hagalu, where the person usually catches fish or harvests other seafood; or
 - (iii) used by the person for ablutions or toileting;

“Hagalu” means the area in the emergency zone that is:

- (a) bounded by a line with the coordinates specified in Part A of the Schedule; and
- (b) indicated by the red line on the map in Part B of the Schedule;

“vessel” means any ship, boat or craft used for travelling by water.

4 Restriction of movement of persons

- (1) On and from 6.00 pm on Wednesday 2 February 2022 until 6:00 pm on Sunday 6 February 2022, a person must not enter or leave Hagalu.
- (2) On and from 6.00 pm on Wednesday 2 February 2022 until 6:00 pm on Sunday 6 February 2022, a person in Hagalu must:
 - (a) remain in Hagalu; and
 - (b) not leave or be away from his or her place of residence; and
 - (c) when moving around Hagalu:
 - (i) wear a face mask; and
 - (ii) practice social distancing; and
 - (iii) wash his or her hands frequently; and
 - (iv) use hand sanitizer frequently.

- (3) Subparagraph (1) or (2)(a) and (b) does not apply to a person who:
 - (a) enters or leaves the Hagalu because of a matter of urgency; or
 - (b) is exempted from complying with this Order under paragraph 6; or
 - (c) is exempted in writing from complying with this Order by the Commissioner of Police.

5 Restriction of movement of vessels

- (1) On and from 6.00 pm on Wednesday 2 February 2022 until 6:00 pm on Sunday 6 February 2022:
 - (a) a vessel must not:
 - (i) enter or leave the Hagalu; or
 - (ii) come alongside or berth at a wharf in the Hagalu; or
 - (iii) go on shore anywhere on the coast of the Hagalu.
- (2) On and from 6.00 pm on Wednesday 2 February 2022 until 6:00 pm on Sunday 6 February 2022, the operator of a vessel must not permit or enable a person on board the vessel to disembark from the vessel and go on shore anywhere on the coast of the Hagalu

6 Exemptions

- (1) An authorised officer is exempted from complying with this Order while carrying out his or her functions, responsibilities or duties as an authorised officer, or travelling to and from the place where he or she carries out those functions, responsibilities or duties.
- (2) An essential worker is exempted from complying with this Order while carrying out his or her work functions, responsibilities or duties, or travelling to and from the place where he or she carries out those functions, responsibilities or duties.
- (3) Paragraph 5 does not apply to:
 - (a) a vessel operated by an authorised officer or an essential worker while performing his or her functions, responsibilities or duties;
 - (b) a vessel operated for a purpose (which is not a purpose for an essential service) that has been approved by the Prime Minister in writing.

128
SCHEDULE
(Paragraph 3)

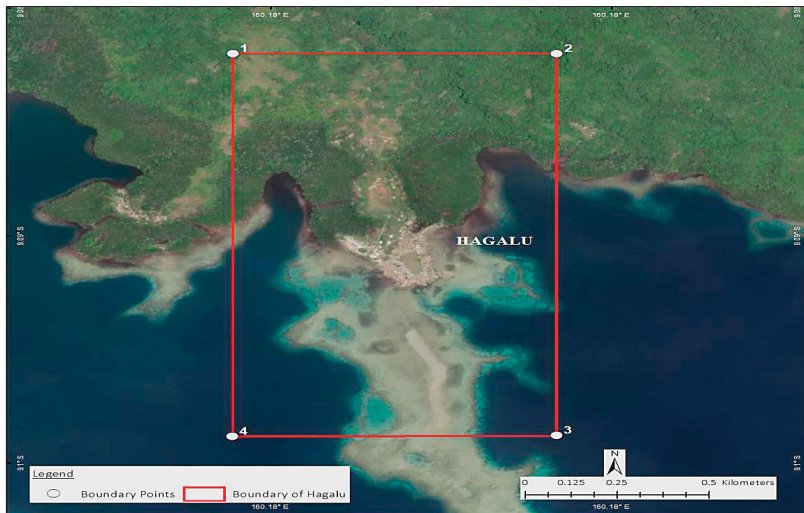
PART A

COORDINATES OF HAGALU

Point ID	Latitude	Longitude
1	-9.085013	160.174079
2	-9.085013	160.181992
3	-9.099016	160.181979
4	-9.099051	160.174055

PART B

MAP INDICATING HAGALU



Dated this second-day of February 2022.

HON. MANASSEH DAMUKANA SOGAVARE
PRIME MINISTER

Honiara, Solomon Islands
Printed under the authority of the
Solomon Islands Government

Printed by Provincial Press