



BY AUTHORITY

59

SOLOMON ISLANDS GAZETTE

NO. 30

Friday 28th January

2022

EXTRA-ORDINARY GAZETTE

LEGAL NOTICE

The following is published as a Supplement to this Gazette:
[Legal Notice No. 29]

[Legal Notice: 29]

EMERGENCY POWERS ACT

(Cap. 11)

EMERGENCY POWERS (COVID-19) (NO. 3) REGULATIONS 2021**EMERGENCY POWERS (COVID-19) (WESTERN PROVINCE
EMERGENCY ZONE) (RESTRICTION OF MOVEMENT OF PERSONS,
VESSELS AND AIRCRAFTS IN MUNDA) ORDER 2022**

I, Hon. Manasseh Damukana Sogavare, Prime Minister, under regulations 15 and 17 of the *Emergency Powers (COVID-19) (No. 3) Regulations 2021* (Legal Notice No. 318 of 2021), make the following Order:

1 Citation

This Order may be cited as the *Emergency Powers (COVID-19) (Western Province Emergency Zone) (Restriction of Movement of Persons, Vessels and Aircrafts in Munda) Order 2022*.

2 Commencement

This Order commences on the day it is published in the *Gazette*.

3 Definitions

In this Order:

“**emergency zone**” means the emergency zone declared for Western Province by Legal Notice No. 24 of 2022;

“**essential service**”:

- (a) has the meaning of “essential service” given in section 2(7)(a) of the *Essential Services Act* (Cap. 12); or
- (b) means any other service the interruption of which could endanger human life, destroy property or cause serious injury to persons or property, including police, correctional services, biosecurity, national disaster and emergency;

“**essential worker**” means:

- (a) a person employed or engaged in carrying out functions, duties or responsibilities in an essential service; or
- (b) a person who the Prime Minister specifies in writing is an essential worker for the purposes of this Order;

“**matter of urgency**” in respect of a person, means a matter that is urgent for any of the following reasons:

- (a) to access immediate medical assistance or treatment for the person;
- (b) to assist another person to access immediate medical assistance or treatment;
- (c) to attend to or avoid an emergency or any other situation which, if not attended to or avoided, may result in serious injury or loss of life to the person or another person;

“**place of residence**”, of a person, means an area or place in Munda where the person resides, regularly stays or is temporarily accommodated, and includes:

- (a) a building or other habitable structure or a yard to a building or structure;
or
- (b) a vessel; or
- (c) an area or place that is:
 - (i) a garden where the person usually grows or harvests food; or
 - (ii) an area of the coastline of the Munda, or of the inland or archipelagic waters within Munda, where the person usually catches fish or harvests other seafood; or
 - (iii) used by the person for ablutions or toileting;

“**Munda**” means the area in the emergency zone that is:

- (a) bounded by a line with the coordinates specified in Part A of the Schedule; and
- (b) indicated by the red line on the map in Part B of the Schedule;

“**vessel**” means any ship, boat or craft used for travelling by water.

4 Restriction of movement of persons

- (1) On and from 6.00 pm on Friday 28 January 2022 until this Order is revoked, a person must not enter or leave Munda;
- (2) On and from 6.00 pm on Friday 28 January 2022 until this Order is revoked, a person in Munda must:
 - (a) remain in the Munda; and
 - (b) not leave or be away from his or her place of residence; and
 - (c) when moving around Munda:
 - (i) wear a face mask; and
 - (ii) practice social distancing; and
 - (iii) wash his or her hands frequently; and
 - (iv) use hand sanitizer frequently.
- (3) Subparagraph (1) or (2)(a) and (b) does not apply to a person who:
 - (a) enters or leaves Munda because of a matter of urgency; or
 - (b) is exempted from complying with this Order under paragraph 6; or
 - (c) is exempted in writing from complying with this Order by the Commissioner of Police.

5 Restriction of movement of vessels and aircrafts

- (1) On and from 6.00 pm on Friday 28 January 2022 until this Order is revoked:
 - (a) a vessel must not:
 - (i) enter or leave the Munda; or
 - (ii) come alongside or berth at a wharf in Munda; or
 - (iii) go on shore anywhere on the coast of Munda; or
 - (b) an aircraft must not land in or take off from Munda.
- (2) On and from 6.00 pm on Friday 28 January 2022 until this Order is revoked:
 - (a) the operator of a vessel must not permit or enable a person on board the vessel to disembark from the vessel and go on shore anywhere on the coast of the Munda; or
 - (b) the operator of an aircraft must not permit or enable a person on board the aircraft to disembark from the aircraft into the Munda.

6 Exemptions

- (1) An authorised officer is exempted from complying with this Order while carrying out his or her functions, responsibilities or duties as an authorised officer, or travelling to and from the place where he or she carries out those functions, responsibilities or duties.
- (2) An essential worker is exempted from complying with this Order while carrying out his or her work functions, responsibilities or duties, or travelling to and from the place where he or she carries out those functions, responsibilities or duties.
- (3) Paragraph 5 does not apply to:
 - (a) a vessel or aircraft operated by an authorised officer or an essential worker while performing his or her functions, responsibilities or duties;
 - (b) a vessel or aircraft operated for a purpose (which is not a purpose for an essential service) that has been approved by the Prime Minister in writing.

SCHEDULE (Paragraph 3)

PART A

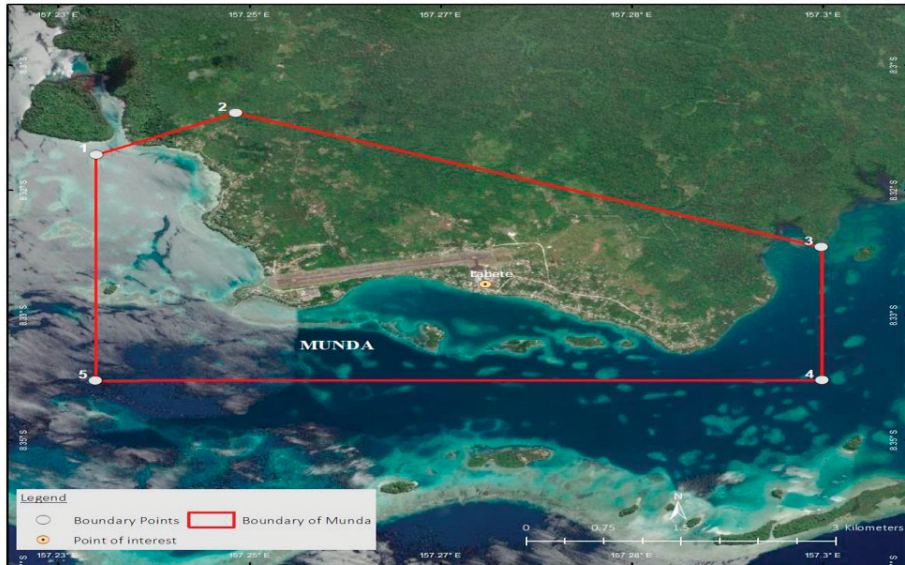
COORDINATES OF MUNDA

Point ID	Latitude	Longitude
1	-8.31193399496	157.23663198100
2	-8.30638174882	157.24876466800
3	-8.32427231931	157.29983162200

4	-8.34202579715	157.29990016900
5	-8.34209434348	157.23656343500

PART B

MAP INDICATING MUNDA



Dated this twenty-eight day of January 2022.

HON. MANASSEH DAMUKANA SOGAVARE
PRIME MINISTER