

SINSO NEWS

Your monthly guide to the Solomon Islands National Statistics Office News, Information and Events • Issue 6 • May-June 2018

Bidding a fond farewell to Erica P5



Solomons first Poverty maps report launched P3



Kimi's welcome message

P 2



Minister Sofu backs village census

P 2



A fond farewell to Erica

P 5



Government Statistician Douglas Kimi’s welcome message to readers

On behalf of the Solomon Islands National Statistics Office (SINSO), I take this opportunity to welcome you to the sixth issue of our monthly E-newsletter. This is a wonderful opportunity for the SINSO to embrace this communication medium and to fully maximize its capacity to disseminate statistical news, stories and information to meet the needs of its readers. This is our 6th edition thus we’re grateful that you’re taking your time to read it.

As the central statistical agency of government, the SINSO through this newsletter will ensure that information is disseminated widely to inform the public of the activities and developments that are happening within the SINSO. In this issue, we share with you the National Statistics Office realisations over the month of May to June 2018 with general news stories covering the NSO’s meeting with various Government Ministries and stakeholders, launch of the Solomon Islands first ever poverty maps report, headline inflation for April 2018, International arrival statistics for the first quarter of this year-2018 with Australia still topping visitors’ record in Solomon Islands, story on NSO officers undergo data handling training and more with accompanying photos.

Now that the internet is increasingly becoming a channel for disseminating news and information, SINSO is very glad that through this network (monthly newsletter), its readers can be better and easily informed online through this fact file on its active website. Feel free to read the bulletins inside this issue. For public interest, the issue is downloadable from our website on this address: www.statistics.gov.sb The newsletter comes out at the end of every month. We hope to continue bringing in interesting articles, news and facts via this medium now and into the future. Please feel free to also forward this issue to your colleagues and friends and also feel free to get in touch with our media team for further information.

Minister Sofu backs “Village Census”

The Minister of the Ministry of Infrastructure Development (MID) Hon. Stanley Sofu has established his strong support to the National Village Resource Survey & Household Listing 2017-2018 (VRS) that is being implemented by the National Statistics Office (NSO). Mr. Sofu revealed this in a dialogue with the National VRS Project Director Raphael Aipaina at his office on Friday 1st June 2018. The meeting was to seek consent from Hon. Sofu and for the authorisation to permit field enumerators to carry out statistics collection in his East Kwaio Constituency (EKC) without fear and restrictions from communities. It was a success as Mr. Aipaina on behalf of the Government Statistician Douglas Kimi and Minister Sofu agreed on accord to join forces and ensure field enumerators collect statistical information without deterrents. “I like the survey,” Mr. Sofu said. “This survey is important since it will help me to identify the specific villages/communities facing difficulty in terms of basic infrastructures-like road, health/clinics and



Village Resource Survey, Director, Raphael Aipaina shake-hand with the MID Minister Stanley Sofu after the successful meeting.

education in my constituency and also the findings will contribute towards my constituency development planning purposes in the future,” he said. He added that the final report or findings of the survey will not only help him but will also aid the National Government (SIG) and policy-makers in its future planning. Speaking on behalf of the Government Statistician Mr. Kimi, VRS Director Mr. Aipaina recognised Mr.

Sofu’s support and authorisation. He said such authorisation is significant given the liberty for officers to perform duties without fear. Mr. Aipaina also thanked Minister Sofu for his time and sentiments raised during the meeting. The discussions held with Minister Sofu was the third non-statistical approach and outcome the NSO have, following two related consensus sealed with the leaders of the Makira-Ulawa Province Platform

communities and the Christian Fellowship Church (CFC) community in the Western Province early April this year. The VRS and Household Listing 2017-2018 is the basis for 2019 Census enumeration areas (EA) demarcation. The survey (VRS) will play the role of assisting the Solomon Islands Government in providing quality data at the village level, which is essential, to see the impact of development, and guide its development efforts and policy – makers in the future, to improve the livelihood and standard of living for all Solomon Islanders. The survey collects information on services to the village and include mapping and also collect information on the location of households by GPS and the number of people per household by gender. The survey now in its final phase since it was started in October last year (2017). The Solomon Islands Government (SIG) through the Ministry of Finance & Treasury (MoFT) is funding the VRS 2017/18 project.

Brief about Village Resource Survey

Village Resource Survey (VRS) has a long history. Initiated in the 1980’s, it was then conducted in 1995-1996, then in 2007-2008, and the present VRS 2017-2018 is the fourth one in the series. VRS 2017-2018 is part and parcel of the 2019 national census count preparation. The VRS will collect information on services to the village across the country including mapping. The household listing exercise will collect information on the location of households by GPS and the number of people per household by gender. This is the basis for Census enumeration areas (EA) demarcation.

NEWSFLASH

First ever SI Poverty Maps- Ward Level report launched



(L-R) Government Statistician, Douglas Kimi, MoFT Minister Hon. Manasseh Sogavare, World Bank Consultant, Professor John Gibson, Country Representative of the World Bank, Dr. Guido Rurangwa and the Australian High Commissioner to the Solomon Islands, His Excellency, Mr. Roderick Brazier with copies of the Poverty Maps-Ward Level report at the launching on Monday 25 June. Photo: SINISO Media

The Solomon Islands first ever poverty mapping based on the 2012/13 Household Income and Expenditure Survey (HIES) and the 2009 Population and Housing Census assessment report was successfully launched on Monday 25 June, 2018. Held at the Honiara Hotel, the Minister responsible for the Ministry of Finance & Treasury (MoFT) Hon. Manasseh Sogavare launched the report in the presence of government officials, the Government of Australia, World Bank, other development partners, NGO's, civil society and media representatives. The maps and assessment report were developed in a joint exercise by the Solomon Islands National Statistics Office (SINISO), the World Bank and the Australian Government through its DFAT's Aid Program in Honiara. This was the first assessment of poverty maps in the country that focusses at ward level poverty estimates which is an important statistical lower geographical indicator for assessing poverty incidence not only at the national and provincial levels but this time at the ward level. The report provide findings of pov-

erty across the country with latest poverty maps provide disaggregated poverty estimates to better understand the geographical variations in poverty incidence/rate. The poverty map is an essential planning tool that provides powerful visuals to identify poor areas with greater accuracy. It is also a powerful way to identify and monitor small areas of particular affluence and poverty across the country. Government Statistician Douglas Kimi said, "for the first time in our development history, we are able to formally identify small areas or wards below the national and provincial geographical levels to see, first hand, the magnitude and distribution of poverty incidences not seen before across and within the whole province." He said that the analysis at ward level is of high quality, innovative and a first of its kind for Solomon Islands. "It is another huge statistical and analytical milestone." The detailed maps and ward level poverty estimates in the Solomon Islands are created by combining information, for the first time,

from the 2012/13 Solomon Islands Household Income and Expenditure Survey (HIES) with data from the 2009 Solomon Islands Population and Housing Census. He said the HIES is a valuable source of data as it includes comprehensive questions on households' consumption and expenditure which was used to estimate poverty rates at the national and provincial level. "This work goes further and complements the earlier poverty report of 2016 poverty by estimating poverty rates at the ward level and not just the national and provincial levels." Mr. Kimi said the study focuses on two key poverty measures which include; the headcount poverty rate (the proportion of the population living below the poverty line), and the number of poor. He said estimates of these measures are derived from each of the 183 wards in the Solomon Islands and maps are drawn to illustrate the results. "The study also derives and reports small-area estimates of the average level of consumption per adult equivalent, the poverty gap index

(the average proportionate shortfall from the poverty line averaged over the whole population), the poverty severity index (where those with the biggest poverty gaps are weighted highest), and the Gini index of inequality in the level of consumption. "In addition to predicted values for these poverty statistics, measures of precision are also calculated. In this study, the precision of the ward-level estimates from the survey-to-census imputation, is similar to the precision of the survey estimates at the provincial level. "The results show a wide range in the prevalence of poverty across the Solomon Islands. The estimated ward-level headcount poverty rates range from zero to 59 percent, with the highest poverty rates in southern parts of Guadalcanal and eastern parts of Makira. "The estimates also reveal a great deal of within-province heterogeneity in poverty rates, which may partly reflect the difficult topography and other barriers limiting the spread of benefits from economic development," Mr. Kimi said.

NOW AVAILABLE!!!

Come see us at the National Statistics Office or talk to us on 23422 and place your order.

The report also downloadable from our website on this link: www.statistics.gov.sb

Development partners support commended



Government Statistician, Douglas Kimi delivers his remarks.

Government Statistician Douglas Kimi has thanked the World Bank and the Australian Government for their assistance and commitment displayed towards the country's first ever Poverty Maps Report.

Mr. Kimi conveyed this at the launching program of the report which was successfully held on Monday 25 June, 2018 at the Honiara Hotel. He said the technical support rendered by World Bank and the fund-

ing assistance by the Australian Government through its Australian High Commission Office in Honiara has been obvious in the effective implementation of the project. "For this, I on behalf of the National Statistics Office (NSO) staff must commend our development partners for such a generous support." Mr. Kimi also recognised the Permanent Secretary for the Ministry of Finance & Treasury (MoFT) Harry Kuma and the Minister and Deputy Prime Minister, Hon. Manasseh Sogavare for their leadership and ongoing support to the NSO. He also acknowledged the staff of the NSO for their support and commitment towards the project. The Government Statistician also used the opportunity and called on development partners and stakeholders to support the NSO in funding and implementing of the 2019 National Census. Poverty Maps report is the Solomon Islands first ever mapping report

produced based on the 2012/13 Household Income and Expenditure Survey (HIES) and the 2009 Population and Housing Census. The report were developed in a joint exercise by the Solomon Islands National Statistics Office (SINSO), the World Bank and the Australian Government through its DFAT's Aid Program in Honiara. This is the first assessment of poverty maps in the country that focusses at ward level poverty estimates which is an important statistical lower geographical indicator for assessing poverty incidence not only at the national and provincial levels but this time at the ward level. Copies of the report are now available at the National Statistics Office for the public and it is also accessible on the NSO website on this link: <http://www.statistics.gov.sb/> Deputy Prime Minister and Minister responsible for the Ministry of Finance & Treasury Hon. Manasseh Sogavare launched the report.



Government Statistician Douglas Kimi receives the World Bank Consultant, Professor John Gibson upon arrival at the launching venue.



MoFT, Minister Hon. Manasseh Sogavare in discussion with the Australian High Commissioner H.E. Mr. Roderick Brazier at the launching.



Australian High Commissioner H.E. Roderick Brazier glance through the report factsheet with the World Bank Consultant, Professor John Gibson.



Government Statistician Douglas Kimi welcomes MoFT, Budget Unit, Under-Secretary Mckinnie Dentana upon arrival at the launching venue.



(L-R) NSO Advisor Willie Lahari, Government Statistician Douglas Kimi, Erica Tolcvay, NSO Senior Administrative Officer Hilda Diudi and the National Statistics Development Strategy 2015/16-2035 (NSDS) Project Manager (interim) Samson Kanamoli with a photo frame of NSO staff presented to Ms. Erica.

Bidding a fond farewell to Erica

Staff of the National Statistics Office (NSO) within the Ministry of Finance & Treasury (MoFT) gathered recently to bid fond farewell to Volunteer Erica Tolcvay.

Ms. Tolcvay has dedicated a year to the NSO becoming a familiar face and a much-loved volunteer until her parting mid May.

Volunteering under the Australian Volunteers International (AVI) program, Ms. Erica worked as the Data Dissemination Policy and Communication Officer for the Solomon Islands National Statistics Office.

During her stint with the Office (NSO) Ms. Erica has contributed a lot towards the Office develop-

ment work program with the formulation of new embargo and data dissemination policies.

At an organised farewell ceremony held on Tuesday 15 May, Ms. Erica said she has enjoyed her time with the NSO with many fond memories to ponder on when in Australia.

"Honestly say, I have enjoyed my time at the NSO. It has been wonderful. The staff have been nice, it is just a nice place. I have loved been a colleague such a wonderful team."

Ms. Erica thanked the Government Statistician and the NSO staff for their support towards her job since she began work with the NSO until her send-off.

Meanwhile, Government Statistician Douglas Kimi on behalf of the NSO thanked Ms. Erica's contribution and service to the NSO since joining the team (NSO) last year.

He said a lot has been acquired by staff of the NSO from the numerous trainings/workshops being organised and facilitated by Erica.

Mr. Kimi also wishes Ms. Erica good fortunes in her future endeavours.

Also as part of NSO's appreciation to Ms. Erica's input, gifts and presents of kinds were presented to her during the farewell party by the NSO management and staff.

Ms. Erica is from Adelaide City, South Australia.



Anna Pitaboe and Hilda Diudi put on a custom made shell necklace on Erica.



NSO Economic Section staff presented a necklace with Ms. Erica's initials (ET) as part of their appreciation to Erica's contribution to NSO.



National Statistics Office staff presented a farewell song to Erica.



Ms. Erica at the farewell party.

NEWSFLASH



Francis Tsatsia, Director Biosecurity-MAL and Banabas Kega, Director Livestock-MAL at the meeting.



Government Statistician Douglas Kimi raising a point during the discussions.

NSO, MAL discuss proposals for close collaboration

Proposals to strengthen the National Statistics Office (NSO) and the Ministry of Agriculture & Livestock (MAL) close alliance in Agriculture census was discussed on the month May, 2018. The dialogue was held at the MAL conference room on Thursday 10 May, 218 with the determination to create a baseline for close collaboration between both Government agencies (NSO and MAL) and that would pave way for the enhancement of Agriculture census across the country. Government Statistician Douglas Kimi said since Agriculture is the backbone of the country's economy, it is crucial that update and accurate data are collected to help in policy formulation by policy makers in the future. He said integrating a close tie with the ministry (MAL) is vital because

it will help the NSO to compile accurate statistics in terms of agriculture production in the country. "That would not only help the NSO in accurate data collection but also help policy makers in the formulation of policies to improve the country's agriculture sector and socio-economic development," Mr. Kimi added. Discussions were also grounded on consideration for the NSO to affiliate with the MAL extension officers in the provinces. Oswald Ramo, Permanent Secretary Supervising for the MAL while commending the NSO for taking such initiative said the meeting was timely and very important. "This meeting is important because it will create a reference point where we can build our relation towards improving data collection with regards to Agriculture production in

the country," he said. Mr. Kimi also informed the MAL delegates on the progress of the first ever National Agriculture Survey Project (NASP) conducted last year and the survey on 'Big Farms' which is the second component of the NASP 2017 that is currently progresses. "The 'big farms' data will supplements the data collected from the household based agriculture survey (NASP 2017) that was completed in October last year and the data currently being analysed," Mr. Kimi said. The NSO piloted the survey (NASP) since last year under its 20 years National Strategy-National Statistics Development Strategy 2016/17-2035 (NSDS). NASP 2017 was the country's first ever national agriculture survey and thus covers all selected household

agricultural holdings. The survey is intended to assist the government through its responsible ministry, the Ministry of Agriculture & Livestock (MAL) with planning to improve agriculture production in the country. The survey will provide benchmark data on land use, type of agriculture and related activities, structure of agricultural holdings and their main characteristics, to support the strategic plans and programmes of the Solomon Islands on agriculture production and investment as well as to support development of some Sustainable Development Goal (SDG) indicators in the agriculture sector. The second nationwide Agriculture census was projected for 2019.



(L-R) from back row, Simon Iro, MAL Deputy Director Planning, Government Statistician Douglas Kimi, National Agriculture Survey Project (NASP) National Coordinator, Charles Oloka, Banabas Kega, Director Livestock-MAL, Francis Tsatsia, Director Biosecurity-MAL, Oswald Ramo, Permanent Secretary Supervisor-MAL, Helen Tsatsia, Director, Research-MAL and Food and Agriculture Organisation rep, Statistician Rasmiyya Aliyeva after the meeting at the MAL conference room in Honiara.

NEWSFLASH

Officers undergo data handling training

Staff of the National Statistics Office (NSO) within the Ministry of Finance & Treasury (MoFT) has successfully undergo an intensive two weeks of training in data processing.

Held at the NSO conference room in Honiara, the training runs from May 7-22.

Trained officers will be responsible for the data entry and processing of the National Village Resource Survey 2017-2018 (VRS) that is nearing completion.

Facilitator and former Government Statistician Joseph Naesol said the training was necessary to equip officers with the essential skills and knowledge on how to use the data processing software and well-versed with the operation system.

"The trained staff now well armed with skills and capability in using CSPro, the software used for data entry and validation-which they trained to enter data collected from the filed using questionnaire and



Facilitator Joseph Naesol with officers during one of the training sessions.

data has to be entered and validated in the computer.

"The questionnaire is around 44 pages, and the validation process is quite strenuous," Mr. Naesol said.

CSPro is an acronym for Census and Survey Processing System (CSPro), developed by the U.S. CENSUS BUREAU, ICF International, and Ser-

pro S.A. The version used is 7.0.0 released on 8 May 2017.

Specific topics covered throughout the training include:

- CSPro structure and Meta data.
- Computer procedure in data entry using CSPro.
- Form editing guidelines.
- Non-sampling errors and how to

control NSE.

- Manageable units in storing data in the computer.

- Going through the 2007-8 VRS, and the lessons learned to improve current VRS.

- House-keeping matters.

- Final comments on the VRS 2017-18 questionnaire.

The training was in two parts. The theoretical aspects of processing a survey, and the software CSPro in how it deals with survey data and the hands-on practical aspect in which data operators actually punch in data from completed forms into the computer using CSPro software. "The training fully equipped the officers to have confidence in entering the VRS questionnaire, which has 14 sections, and 10 of the sections having 24 sub-tables. The VRS 2017-18 hopes to cover around 7,000 villages' throughout the country, and processing period is envisioned to take seven months using at least 6 data operators," Mr. Naesol said.

Statistics Office meets with FAO reps

The National Statistics Office (NSO) has met with the Food and Agriculture Organisation (FAO) on the month of May 2018 over the National Agriculture Survey Project 2017 (NASP).

The meeting with the FAO representatives was to;

- Discuss the National Agriculture Survey Project 2017 (NASP) data analysis and report writing including launching and dissemination
- Identify and interview four candidates to be selected for the analysis of NASP survey results
- Discuss draft output plan outlining the content of analysis
- To have a workshop/training with those identify tasks and timelines
- How to modify the remaining project resources for the provision of better support to NSO
- Discuss future agriculture surveys/census plans for Solomon Islands especially with the Ministry of Agriculture & Livestock (MAL) and
- Identify capacity building needs for Sustainable Development Goals (SDGs) monitoring (indicators under FAO custodianship)

Government Statistician Douglas Kimi said the dialogue was crucial considering the fact that the household based agriculture survey or



NASP 2017 National Project Coordinator Charles Oloka informed the FAO regional Statistician based in Samoa Ms. Rasmiyya Aliyeva on the progress of the survey.

NASP was completed in October last year and the data currently being analysed.

"The second component of it (NASP) is the census on 'Big Farms' which is progressing and also nearing completion.

"FAO as the Technical backer to the project (NASP), it is important that we sit together and discuss shared understanding on how we can go about the write-ups and analysing of data for the final report," the Government Statistician said.

Mr. Kimi said the series of discussion was successful.

He said NSO is looking forward to the launching of the survey report

next year and also to bolster its partnership with FAO in future survey projects.

Mr. Kimi also pleased with the current progress so far and has acknowledged the work being progressed by MAL's Extension Officers and the NSO Staff.

Meanwhile, NASP National Project Coordinator Charles Oloka thanked the National Government (SIG) for its financial support and commitment towards the survey.

He said the support rendered by the government has proved in the successful implementation of the project initial phase and the roll out of the second component (big farms

census) which is currently in progress.

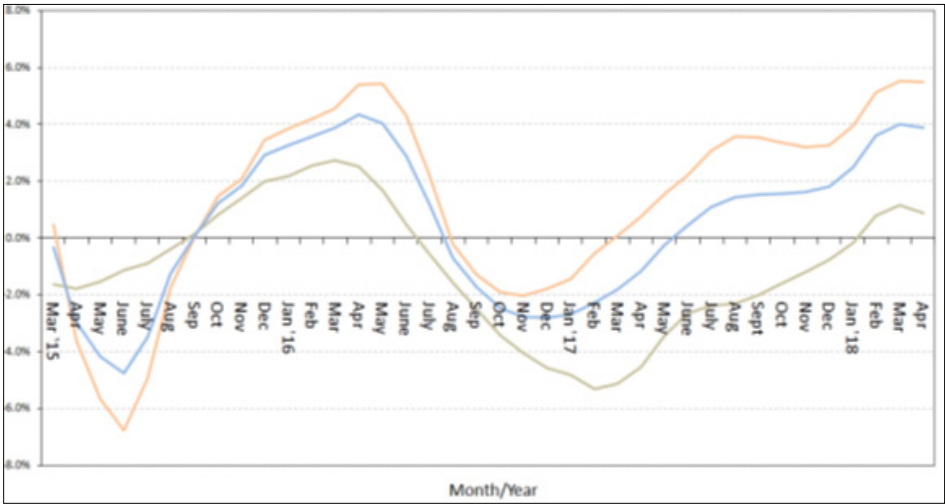
The 2017 NASP was the country's first ever national agriculture survey and thus covers all selected household agricultural holdings.

The survey is intended to assist the government through its responsible ministry, the Ministry of Agriculture & Livestock (MAL) with planning to improve agriculture production in the country.

The survey will provide benchmark data on land use, type of agriculture and related activities, structure of agricultural holdings and their main characteristics, to support the strategic plans and programmes of the Solomon Islands on agriculture production and investment as well as to support development of some Sustainable Development Goal (SDG) indicators in the agriculture sector.

The project is supported by the Solomon Islands Government (SIG) through the Ministry of Agriculture and Livestock (MAL) with the Technical support from Food and Agriculture Organisation (FAO) and Secretariat of the Pacific Community (SPC).

The survey (NASP 2017) results are expected to be released next year.

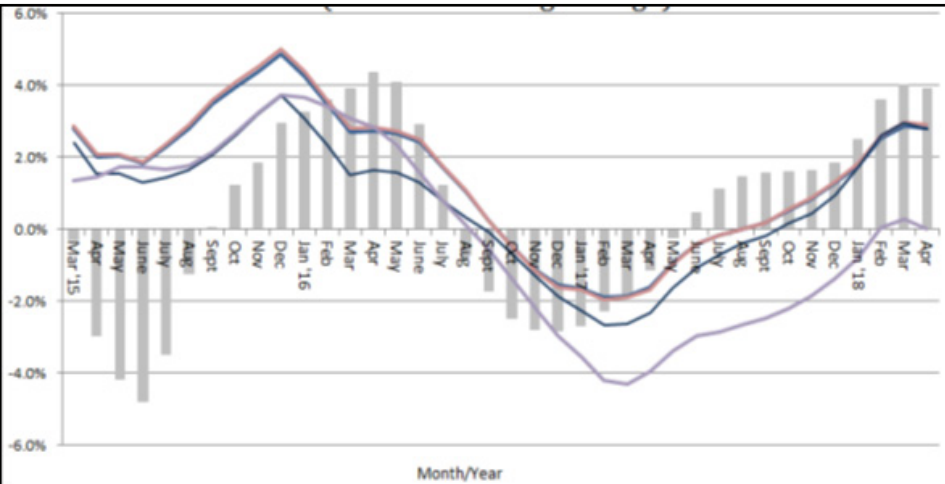


Graph shows the Honiara annual inflation rates from April 2015 to April 2018.

Headline inflation drops

Despite rise in Food prices in Honiara, headline inflation for the month of April dropped slightly by 0.03 per cent compared to the previous month of March, 2018. This persisted through the annual inflation rate ending April 2018 of 3.9% recorded on a 3 months moving average showing a marginal drop of 0.1 percentage points from the previous 4.0% recorded. The National Statistics Office (NSO) latest Honiara Consumer Price In-

dex (CPI) for the month of April 2018 has revealed. CPI is a monthly indicator of the variation in prices for retail goods and other items. The basket of goods chosen represents the spending behaviour of the population of Honiara and the resulting CPI is used to calculate inflation. Government Statistician (GS) Douglas Kimi while releasing the official statistics on Thursday 31 May



Graph shows the Honiara annual headline and underlying inflation rates from April 2015 to April 2018.

2018 said the slight fall was 0.03 per cent from 194.7 in March to 194.6. He said the price fall was mainly driven by price drops in Drinks and Tobacco, and Household Operation categories of the index, which outweighed price increases in Food, and Housing and Utilities sub-indexes. “The Food index went up during the month by 0.9 per cent to 181.9. This was mainly driven by price rises in sugar 3.1 per cent, and fresh fruits and vegetables sold at the Honiara market; most notable were bush cabbage 25.8% per cent, paw-paw 22.0 per cent, tomatoes 20.7 per cent, fern cabbage 17.0 per cent, cooking banana 3.1per cent, green coconut 1.9 per cent, spring onion 8.2 per cent and green pepper 8.6 per cent. These outweighed price drops in dry coconuts -23.5 per cent, melon -14.2 per cent, Chinese cabbage -8.4 per cent, cucumber -7.2 per cent, kumara heaps -6.9 per cent, cassava -1.6 per cent, green bean -0.7 per cent, bush lime -8.3 per cent and non-alcoholic beverages -0.3 per cent to result in the slight rise of the overall food index,”

Mr. Kimi stated. Other major changes in other sub-indexes include;

- Drinks and Tobacco fell 6.7 per cent driven by a 1.6 per cent and 20.3 per cent price drop in tobacco and betel nut, respectively.
- Clothing and Footwear fell 0.2 per cent on account of a 3.1 per cent drop in footwear prices.
- Housing and Utilities went up 0.8 per cent largely driven by a 3.5 per cent increase in electricity charges.
- Household Operations dropped 0.2 per cent driven by price falls in household cleaning products, notably soap.
- Miscellaneous Items fell 1.4 per cent resulting from drops in the prices of toiletries.

Mr. Kimi said apart from the above, price movements elsewhere in the consumption basket were negligible. “The main underlying rates of inflation based on a 3 months moving average for the month of April 2018 were observed between 0.0 per cent and 2.9 per cent while the headline inflation rate was at 3.9 per cent,” he said.

Australia still tops visitors’ record

Australia has been recorded as the country that has many of its nationals visiting the Solomon Islands in the first quarter of this year. Government Statistician Douglas Kimi revealed this while releasing the visitors statistics produced by the Solomon Islands National Statistics Office (SINSO), June. The travels were being recorded from visitors by country of residence, visitors by month, tourists, visitors by purpose of visit, visitors by age group, visitors by occupation and visitor by carrier. “Australia continue to dominate the ranks of international arrivals to the Solomon Islands with 34.9 per cent,” Mr Kimi said. “The second largest group of visitors were from Other Asia with 15.1 per cent, followed by Fiji 7.2 per cent, Other Pacific 6.5 per cent, Papua

New Guinea 6.2 per cent, New Zealand 5.7 per cent and the United States of America with 5.1 per cent.” On visitor arrivals by month, Mr. Kimi said the month of March recorded the highest number of arrivals in the first quarter of 2018 with 2,360 visitors. “This was followed by month of January with a total of 2,081 visitors and February the least with 1,855 visitors. On tourist, Mr. Kimi said 1,941 tourists arrived in the first quarter of 2018 and they spent an average of 15.5 days in the country. “Australian residents still made up the highest proportion of tourists with 38.7 per cent for the quarter and stayed in the country for an average of 11 days. Residents from Other Asians made up the next largest group of tourists 11.5 per cent, followed by United States of America 8.6 per cent, Other Pacific

ic 6.3 per cent, China 5.3 per cent, while Papua New Guinea, Japan and Other Europe with 4.2 per cent.” Mr. Kimi added that the most common reason for visitors visiting the country during the quarter was for other reason with 28.3 per cent followed by visiting for holiday or vacation 27.0 per cent, Business and Conference 26.1 per cent, visiting friends and relatives 14.7 per cent and transit & stop over with 3.8 per cent. “The distribution of visitor arrivals by broad age groups for first quarter 2018 showed that 77.1 per cent of Visitors were in the 25 years to 64 years age range. “The youngest age group, 0 -14 years, represented 4.5 per cent of the arrivals while the oldest age group, 65 years and over made up 7.1 per cent of total visitor arrivals. The remaining 4.6 per cent were

visitors who did not state their age. Male visitors represented more than half of the total visitor’s arrivals with 70.9 per cent and female visitors made up 29.1 per cent of arrivals in the quarter,” Mr. Kimi stated. He added that visitor by Occupation showed that the “Professional and technical” category made up the largest percentage of occupations with 30.8 per cent during the quarter. This was followed by visitors who stated their occupation was from the other occupation group 29.9 per cent, administration & managerial positions 14.1 per cent, no work 9.2 and production and related workers with 5.3 per cent. “The most popular carriers during the quarter were Solomon Airlines who carried 43.6 per cent of total visitors, followed by Air Niugini with 29.5 per cent and Virgin Australia 18% per cent,” Mr. Kimi said.

Poverty maps report launching in pictures



Finance Minister, Hon. Manasseh Sogavare received the Country Representative of the World Bank, Dr. Guido Rurangwa while Government Statistician Douglas Kimi and NSO Advisor Willie Lahari looks on.



Government Statistician, Douglas Kimi in discussion with a World Bank rep at the launching of the poverty maps report, held at the Honiara Hotel, Monday 25 June, 2018.



Solomon Islands National Statistics Office staff glance through the poverty maps report after it was launched.



NSDS Administrative Assistant, Linda Walesara and NSDS Secretary, Anastasia Taghanepari with copies of the porverty maps report.



Solomon Islands National Statistics Office Advisor, Willie Lahari chatting with an official at the launching program.



MoFT, Minister Hon. Manasseh Sogavare in discussion with the Australian High Commissioner H.E. Mr. Roderick Brazier at the launching program.



(L-R) Assistant Statistician, Besty Uruhiaro, Assistant Statistician Florence Walekwate and Hilda Diudi, NSO Administration Officer.



(L-R) National Statistics Development Strategy (NSDS) Assistant Secretary, Jenny Funusui Baura, NSDS Project Manager (interim) Samson Kanamoli and National Statistics Office Advisor, Willie Lahari.

NEWSFLASH

Visitors hit 11k in 2018 first quarter

A new count of 11,593 international visitors arrived in Solomon Islands in the first quarter of this year. Government Statistician Douglas Kimi said while releasing the official statistics produced by the Solomon Islands National Statistics Office (SINSO), June. Mr. Kimi said though the record hit the figure,

there was a fall of 28.5 per cent noted compared to the fourth (last) quarter of 2017. However, he added that compared to the same quarter a year ago, an increase of 15.6 per cent was recorded. He said visitors made up 54 per cent of arrivals for 2018 first quarter while 45 per cent of arrivals were accounted for returning residents and

the remaining 1 per cent were for intending residents. “Visitor arrivals for the first quarter decreased by 11.6 per cent to 6,296 visitors, compared to the fourth quarter 2017 figure of 7,122 visitors. There was a 29.0 per cent increase in visitor arrivals from first quarter 2017 to first quarter 2018,” he stated.

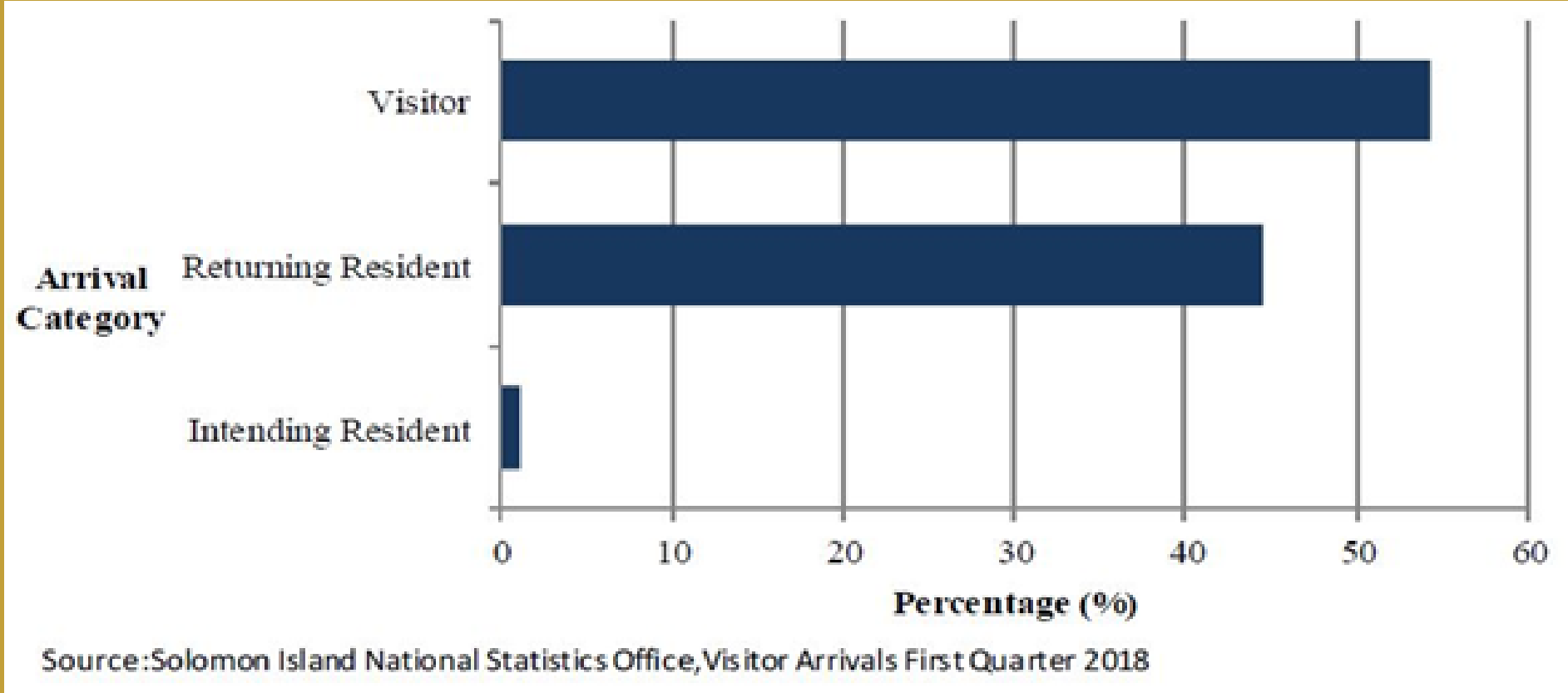


Chart depicts arrival category and percentage.

About Us

The Solomon Islands National Statistics Office (SINSO) is a division within the Ministry of Finance and Treasury. Guided under the Statistics Act 1970 (Amendments 2007), the Census Act 1959, the SINSO is mandated to compile and disseminate official statistics of the Solomon Islands. The SINSO serves as the leading source of quality data about the population and the economy. We honor privacy, protect confidentiality and conduct our work openly. We are guided on this mission by our strong and capable workforce our readiness to innovate and abiding commitment to our customers. It is our goal to provide the

best mix of timeliness, relevance, quality, and services cost for the data we collect. The Government Statistician (GS) and his Statistics Management team lead the SINSO. The office is made up of four sections; the Economic Statistics Unit, Social and Demography Statistics Unit, Census and Survey Statistics Unit and Executive Management and Support Services Unit. Altogether there are 26 staff (including the GS) in the department carrying out duties ranging from collecting, compiling, analysing and disseminating information in the various subjects in the different sections.


Our core functions

As a Central Statistical Agency of the Government guided under the Statistics Act 1970, (Amendments 2007, the Census Act 1959), our role is to:

- Design standardized statistical instruments for producing Solomon Islands’ statistics: harmonized classifications, organizational methods and structures, technical standards.
- Harmonise statistical information: drawing up a set common concepts, languages and tools for producing statistics.
- Produce Solomon Islands’ statistics: consolidate the statistics of the Provinces and ensuring that they are comparable.
- Supply statistical information: identify, analyze and interpret Solomon Islands’ statistical data.
- Disseminate statistical information.
- Coordinate the Solomon Islands Statistical System.
- Advise statistical systems: help to improve the national statistical systems and promote good practice within the Solomon Islands Statistical System.
- Promote research and development: encourage research into techniques and tools for collecting, processing and analyzing data.

Coming up in our next issue

- Trade deficit of \$334.2m recorded in 2017 final quarter.
- Inflation drops 0.9% in May.
- VRS final phase progress.
- And more stories on the NSDS projects that the National Statistics Office is implementing.



For media inquiries contact National Statistics Office/NSDS Media team on Phone: 23422
E-mail: sdiisango@mof.gov.sb