



# PLANTATION MAINTENANCE.

## HEMI BARAVA IMPORTANT FOR GROWIM BIG LOG

Plantation blo otta needim fourfalla type bilong maintenance;

1. Brushing and removim vine;
2. Singling trees;
3. Pruning;
4. Thinning.

Suppose otta completim every type bilong maintenance, bai otta garrem big log for sellim.

### BRUSHING

Outgrower hem needim for outim every rope, grass and somefalla nogood trees lo inside plantation blo oloketa every time. This one hemi helpem tree for grow straight and quick time.



### SINGLING

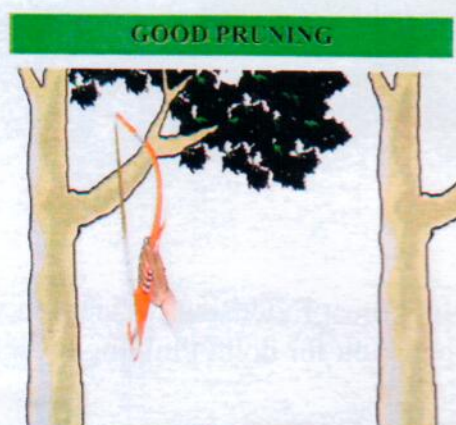
Every tree hem needim for growim onefalla stem nomoa. This one allowem tree for grow straight and quicktime. If tree hem garrem more than onefalla stem, need for outim somefall no good stem.



### PRUNING

Pruning hem helpem for makim timber blo you for grow strong, look nice and increasim value. Otta need for cuttim branch close up lo stem like thisfalla picture hem show.

Go lookim FEO blo you for askim advice and borrowim tools.





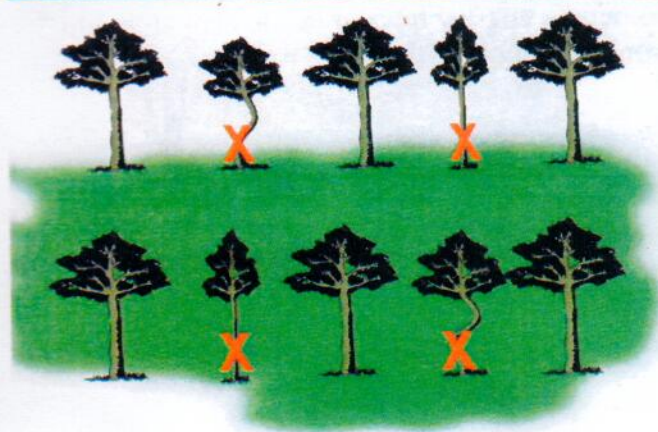
# PLANTATION MAINTENANCE.

## HEMI BARAVA IMPORTANT FOR GROWIM BIG LOG

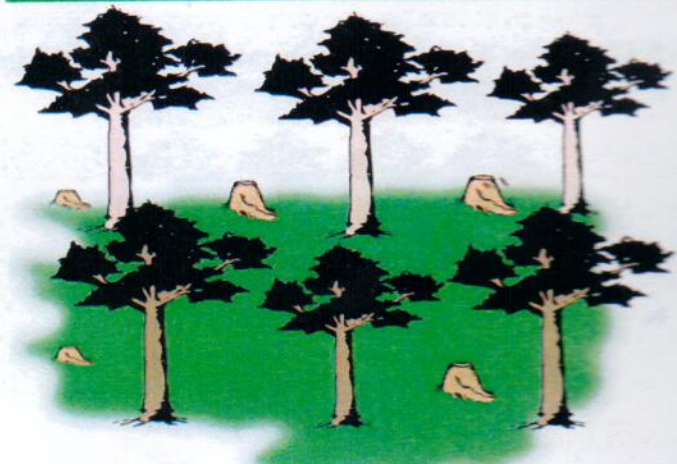
### THINNING

Thinning makim tree blo you for garrem big size and big value. Suppose you no thinnim plantation blo you, bai you garrem small tree and small value.

#### BEFORE THINNING

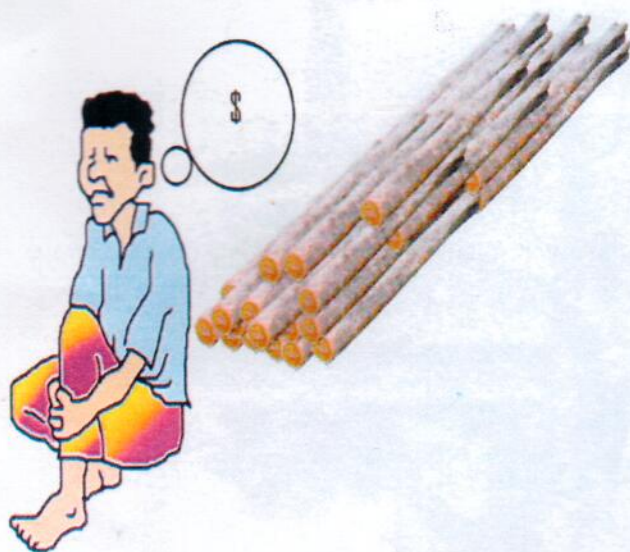


#### AFTER THINNING

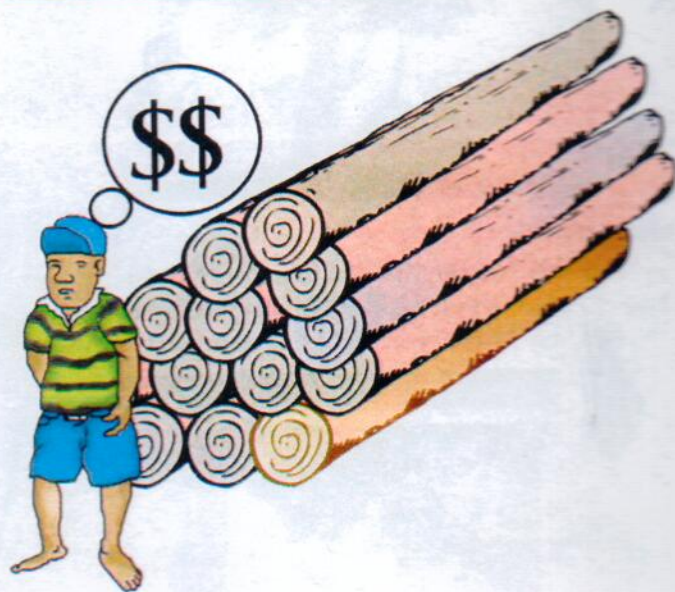


Thisfalla small log you outim from thinning hem good for buildim kitchen, house, firewood or fence.

#### LOG BLO PLANTATION WHERE YOU NO DOIM THINNING LONG HEM



#### LOG BLO PLANTATION WHERE YOU DOIM GOOB THINNING LONG HEM



Go lookim Forest Extension Officer blo you for askim advice and borrowim tools. FEO blo you bai hem helpem you for doim thinning lo right time and helpem you for selectim no good tree for outim.